

Installation and User Manual for DISTO™ transfer pc

Installation of the Programs for the Leica DISTO™

- Place a CD in the CD/DVD drive - the installation program starts automatically.
- Follow the indications on the screen.

Switch into the Local Language

Start using

[Start] → [Program Files] → [DISTO transfer pc] → [Sprache_Language]

In the language selection program choose the desired language.

First Time Set Up of a Leica DISTO™

Check that the Bluetooth hardware is fully operating:

Is the Bluetooth Dongle inserted and is it recognized by Windows automatically and fault free?

If not utilize Windows help or the advices of the manufacturer of the dongle.

With the Bluetooth set up program (part of the delivery content) for Leica DISTO™ you can connect the DISTO™ with the Bluetooth device: Start the program with:


[Start] → [Program Files] → [DISTO transfer pc] → [Bluetooth set up]

and follow the instructions on the screen. It is also possible to use the normal Bluetooth manager in order to register the Leica DISTO™ on the PC. Nevertheless this method is much more elaborate.

For every Leica DISTO™ which is used with the same PC you have to go through this procedure only **once**.

Using DISTO™ transfer pc

Switch ON the Leica DISTO™ and press the Bluetooth key. The Bluetooth symbol on the DISTO™ display starts blinking.

Start DISTO™ transfer pc 1.0 either via the  icon on your desktop or start it via:

[Start] → [Program Files] → [DISTO transfer pc] → [DISTO transfer pc]

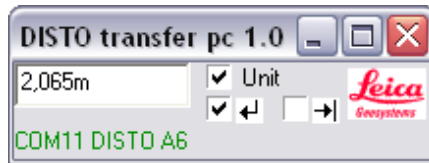
The program starts and will find the DISTO™ very quickly. The measurements can be send into any Windows program, simply by pressing the Bluetooth key of the Leica DISTO™ A6 or the [Enter] key of Leica DISTO™ plus.

The current measuring value will be transferred automatically at the current cursor position. Just in the very same way as if the input had been made by typing on a keyboard.

If one wants to use several Leica DISTOs™ at the very same time, one must start for each individual Leica DISTO™ its own DISTO™ transfer pc. The number of simultaneously used DISTOs™ and DISTO™ transfers is virtually unlimited.

Description of the Program-Window of DISTO™ transfer pc

Here is the result of the last measurement



In the status line the COM port used for the Leica DISTO™ transfer can be seen. If it is indicated in red letters "**No DISTO found**" it should be checked whether the DISTO™ is switched on and if Bluetooth is activated. Close and restart the program.

[Unit]

If this box is marked every measurement is automatically completed with the currently used measurement unit.

[Enter]

If this box is marked every measurement is automatically completed with an [Enter] as if the [Enter] key has been pressed. Excel e.g. jumps to the next lower cell.

[Tab]

If this box is marked every measurement is automatically completed with a [Tab] as if the [Tab] key has been pressed. Excel e.g. jumps to the next cell on the right

General Hints

How to send Measurements

If a measurement from the DISTO™ to the PC has to be sent, there are different procedures according to the different DISTO™:

- When using the **Leica DISTO™ plus** press the **[Enter]** key.
- When using the **Leica DISTO™ A6** press the **[Bluetooth]** key.

[Enter] and [Tab] Settings

- If [Enter] and [Tab] are both marked, than the measurement value, an [Enter] and then a [Tab] is transferred.
- When neither [Enter] nor [Tab] is marked, a blank space is sent after the measurement. This is most useful for the transfer into programs like AutoCAD. AutoCAD treats the blank space as confirmation.

Using the DISTO™ Cursor Keys

If the **[2nd]** key of the DISTO™ keyboard is pressed, the second keyboard layer of the DISTO™ keyboard is activated. Now the cursor keys are active, and the PC cursor can be directed via the Leica DISTO™. This is very convenient for Excel or similar programs.